



Quick Start Guide to Using Upstart By Web Mountain Technologies

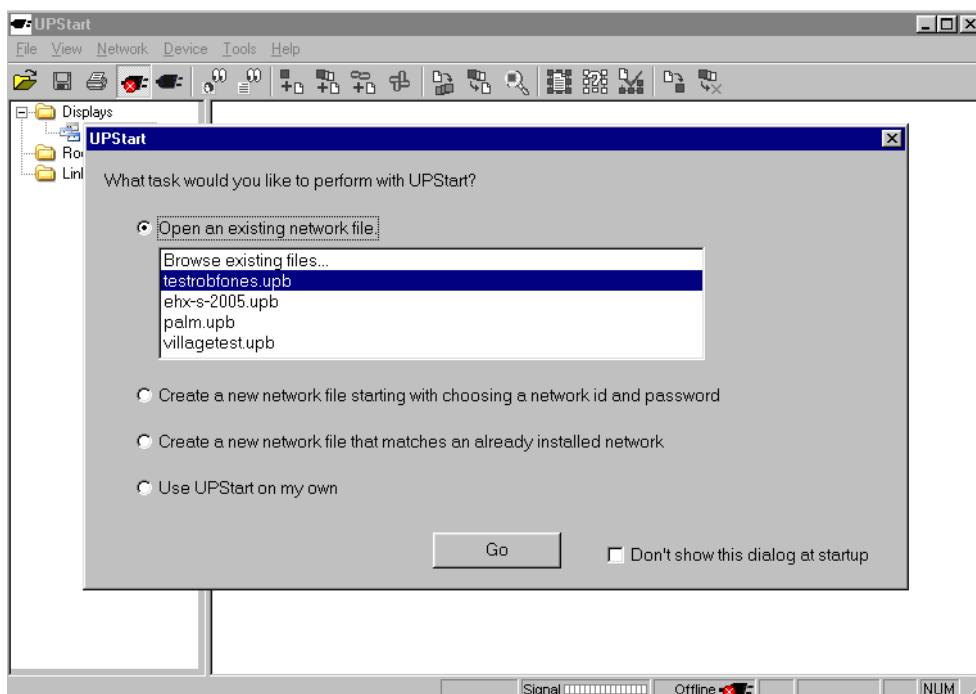
When UPB modules are shipped, right out of the box, some devices will work together. For example, all wall switches are programmed to respond to Links 1 – 6 while the 6 button controller is set to transmit Links 1 – 6. So, if you take a wall switch out of the box, install it, and then install a 6 button wall controller out of the box, then you push the ON button on the 6 button, the wall switch will come on.

While this is somewhat handy, it is very limiting. And, there are other units that will not play as well together. Sooner, or later, you are going to want to program UPB devices. One way to do that is to use the Upstart program.

This document is a quick introduction to Upstart and how to use it to program devices.

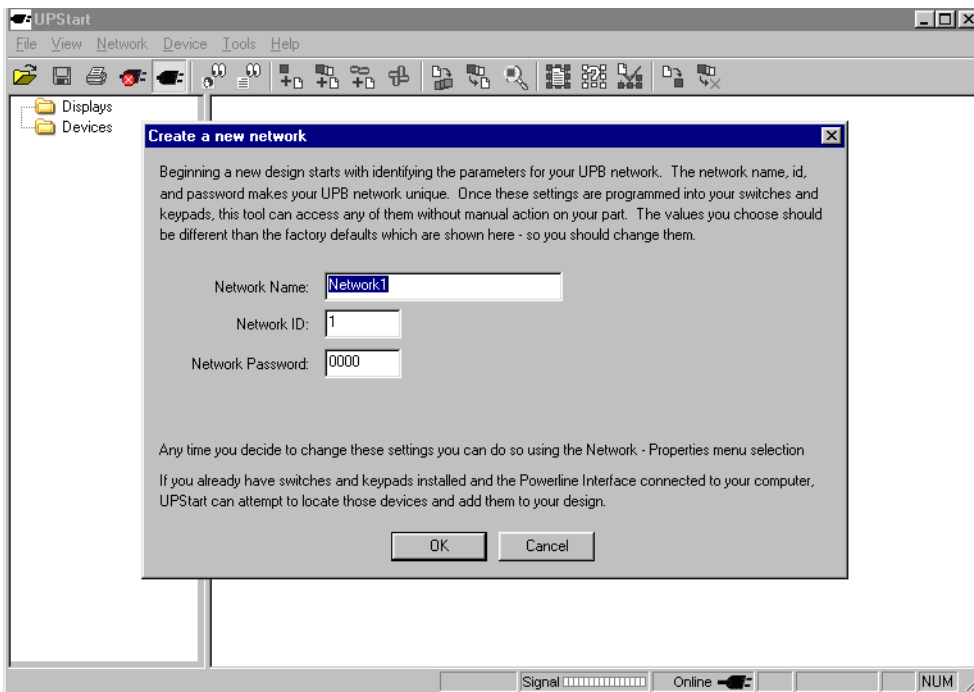
Steps:

1. Download the Upstart program from the Web Mountain (www.webmtn.com) or PCS website (www.pcslighting.com).
2. Install it onto your laptop or PC.
3. Acquire a serial PIM module (Web Mountain's SPIM-01).
4. Connect it to the serial port of your computer.
5. Run the Upstart program by doing START – PROGRAMS – UPB – Upstart.
6. Upstart will display this window



You can select how you want to proceed – either open an existing file, create a new network, detect an existing network, or just play with Upstart. In most case, you will want to create a new network.

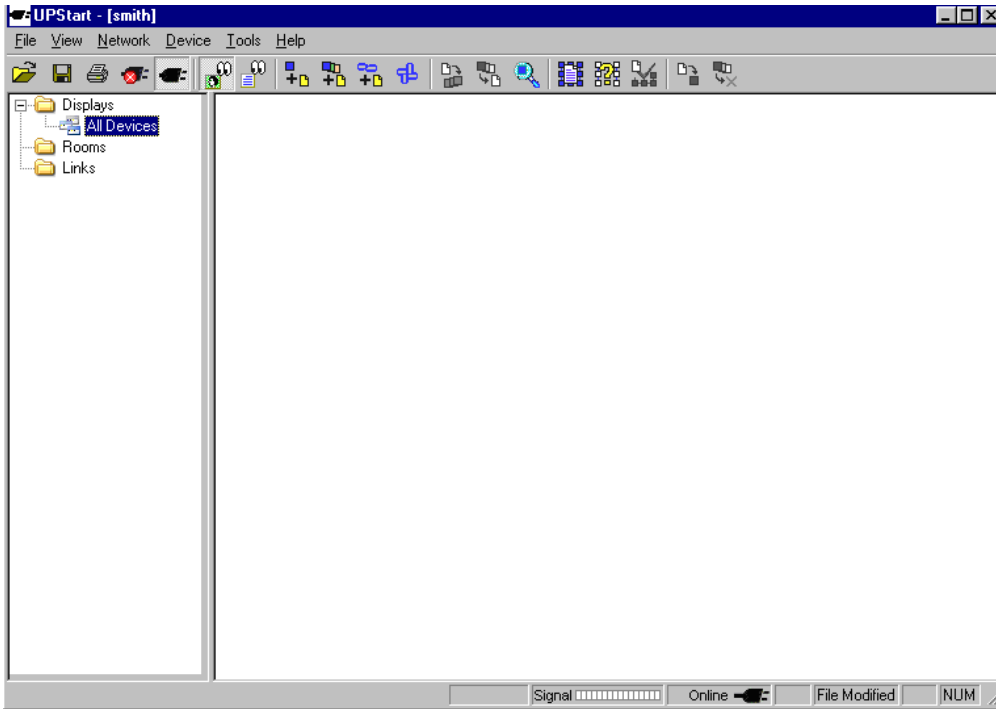
7. Click on Create a new network, and after testing to see if the SPIM is connected, you see this screen (if you get an error message that the PIM was not found, then go ahead and open Upstart, but then go to Tools, UPB Interface Device – Select. There, make sure the screen does not say NONE for the PIM, but instead says Serial PIM - R. Then, make sure you have the correct serial port selected):



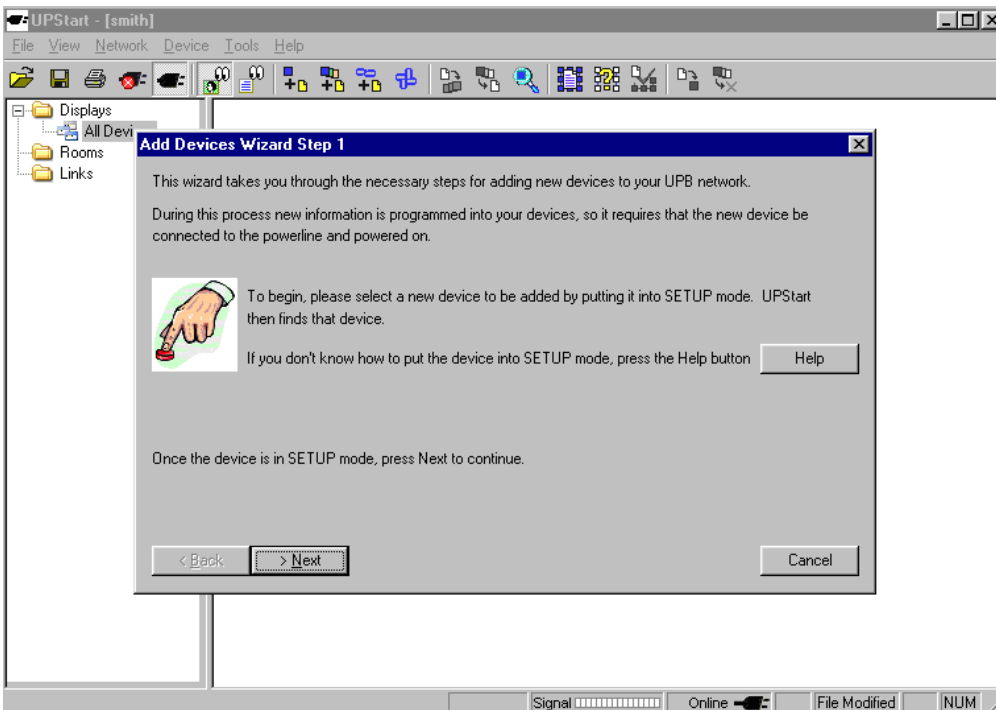
Select appropriate values for the three text boxes. We don't suggest leaving the default values – that can create problems if you have two homes next to each other both utilizing UPB. We suggest using a network name that matches the end user, for example "smith". The Network ID can be anywhere between 1 – 250, and the Network password can be any digit from 0 – 9 and A –F.

Click OK.

8. Now you see the following screen – a blank screen ready for you to add devices.



Now, we're ready to program and install devices. Click on Device, Add. You see this screen:



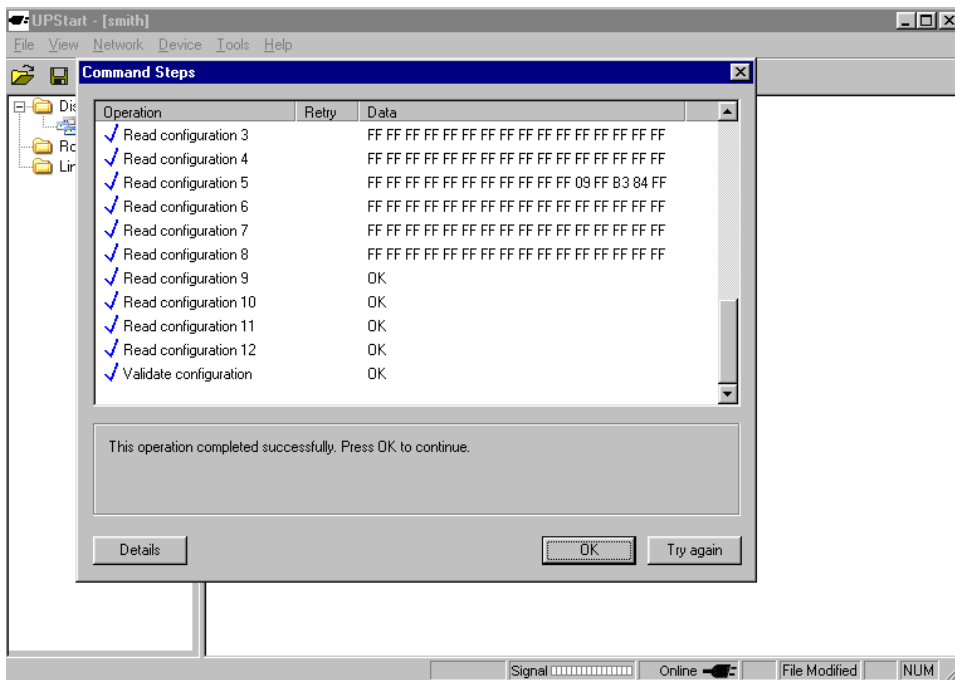
Notice that this screen tells you to put your device into setup mode. Different devices are put into setup mode differently. Refer to the spec sheet on the device to get the setup mode method, but a quick general tip is as follows:

- Wall switches – tap either rocker five times rapidly
- Plug – in modules – tap pushbutton switch on side five times rapidly
- Multi-button controllers – push top and bottom buttons simultaneously

You will know that the device is in setup mode, as the LED will be flashing green.

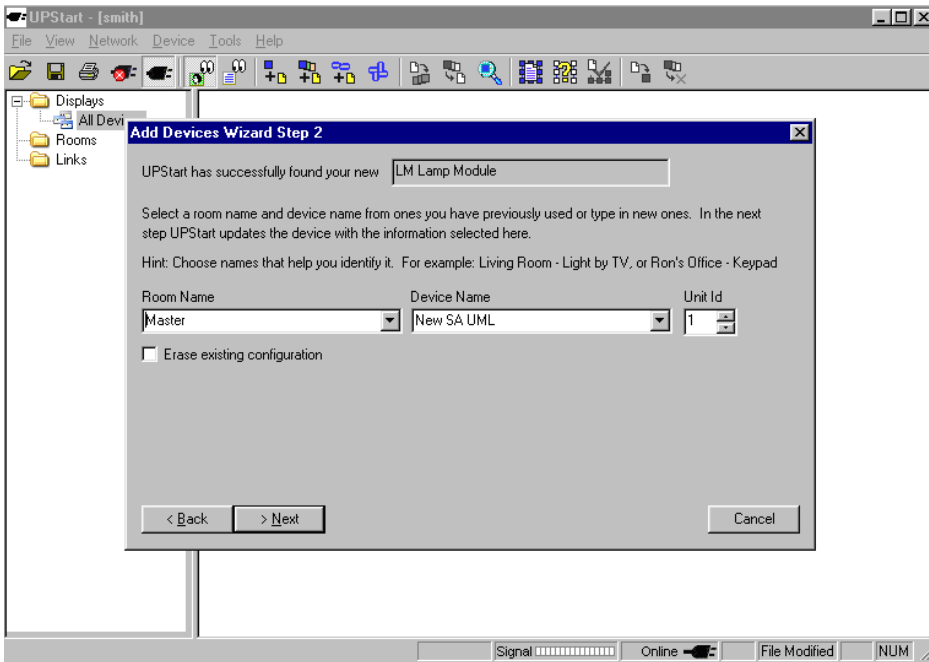
Once the device is in setup mode, click on NEXT.

9. The screen will start showing a progress screen as Upstart reads the current configurations of the device in setupmode.



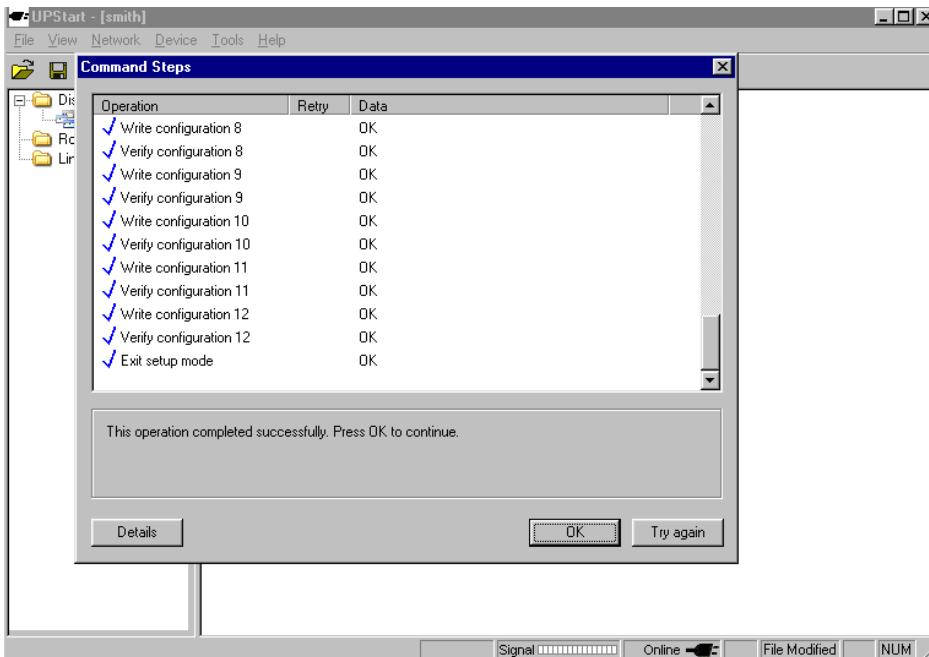
Once it has completed successfully, click the OK button.

10. Now, the next screen allows you to name the device and select a room to put it into. You also see that Upstart recommends a Device ID for the selected device, but allows you to change it if you desire. In most cases, you will accept the suggested device ID. You will also notice that it tells you what kind of device you have, in this case a Lamp Module.



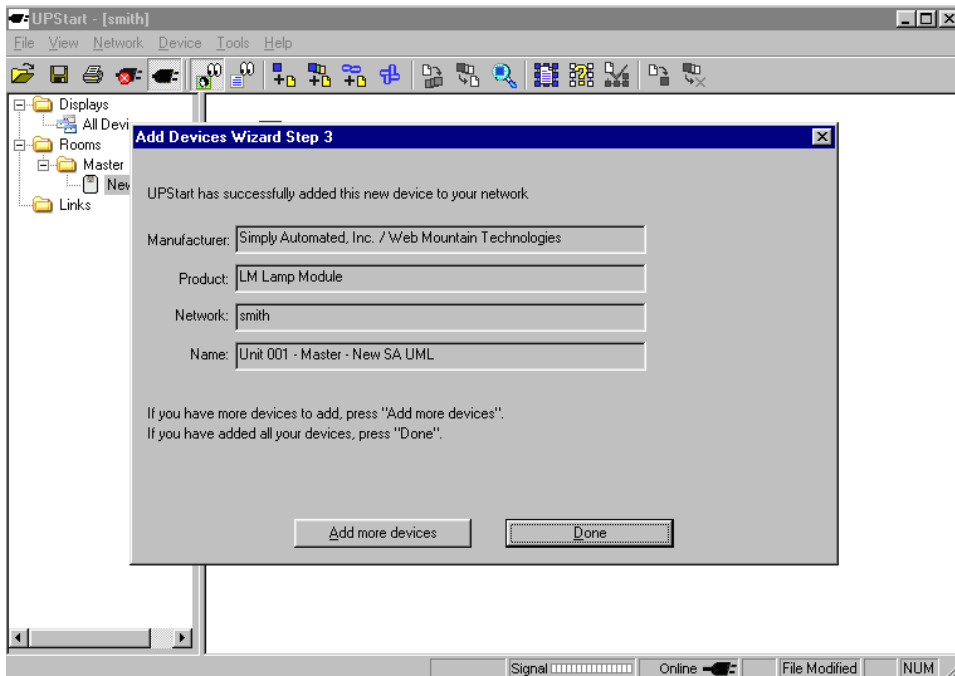
Click NEXT.

11. Upstart now writes the new parameters to the device. Once it's completed, you see this screen:

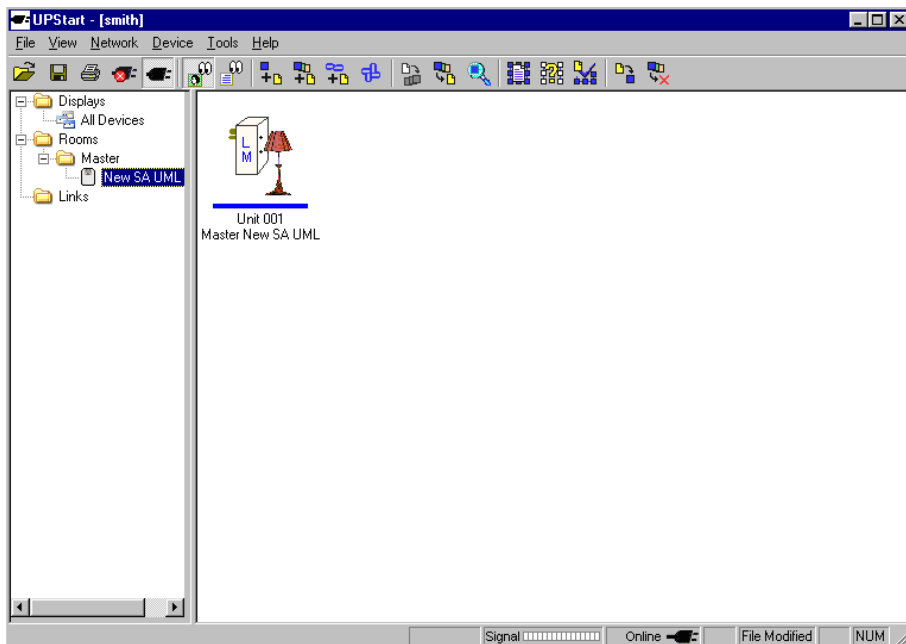


Click OK.

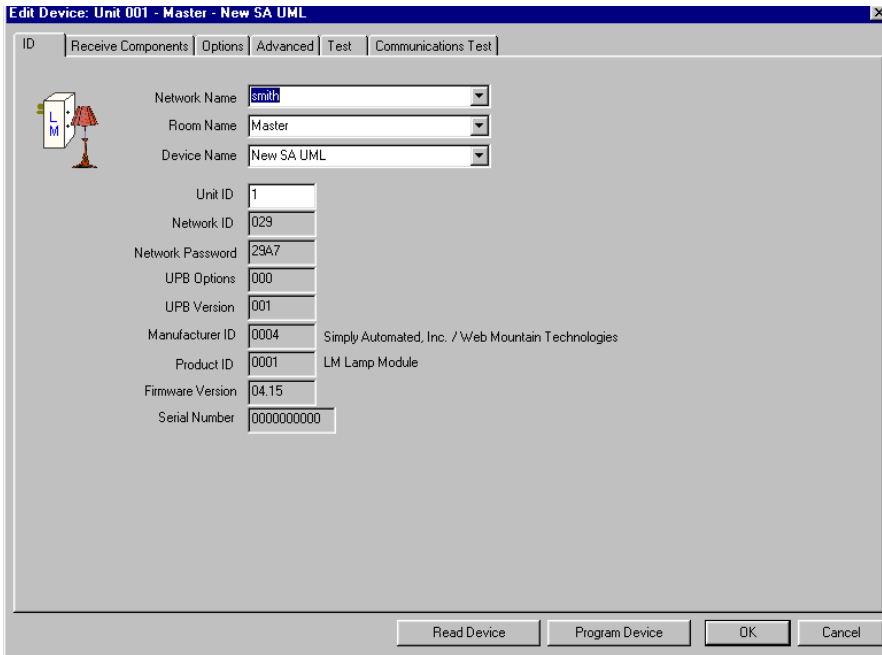
12. Now you see a summary page. Click DONE to finish the programming.



13. Now you see the following screen. If you have many devices that you have installed, you will see an icon for each device.

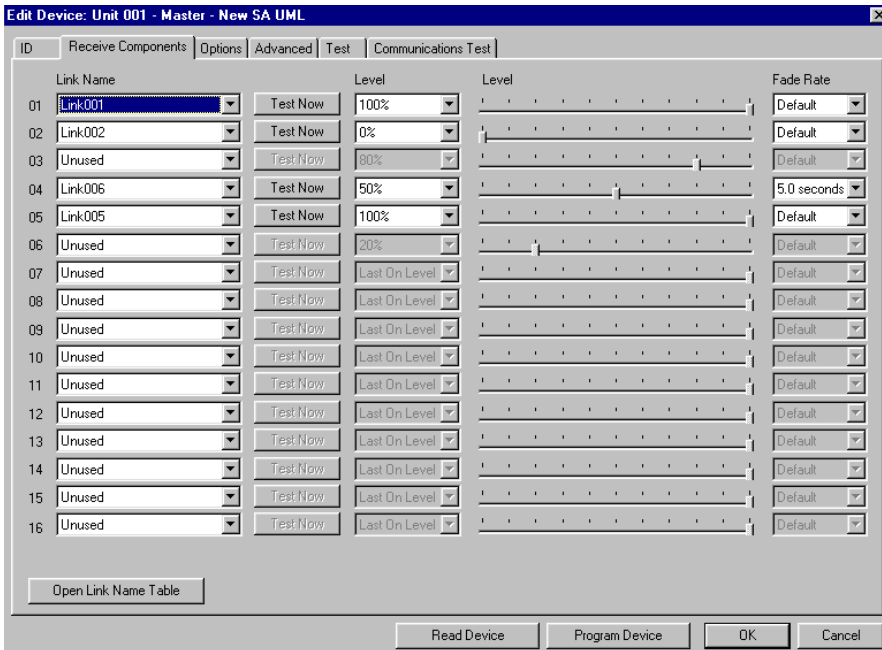


14. Double click on the icon for the lamp module above. The screen will come up with a window with tabs at the top for ID, Receive, Options, Advanced, Test, and Communications Test. If you look at the first screen, which is showing the ID tab, you see the following:



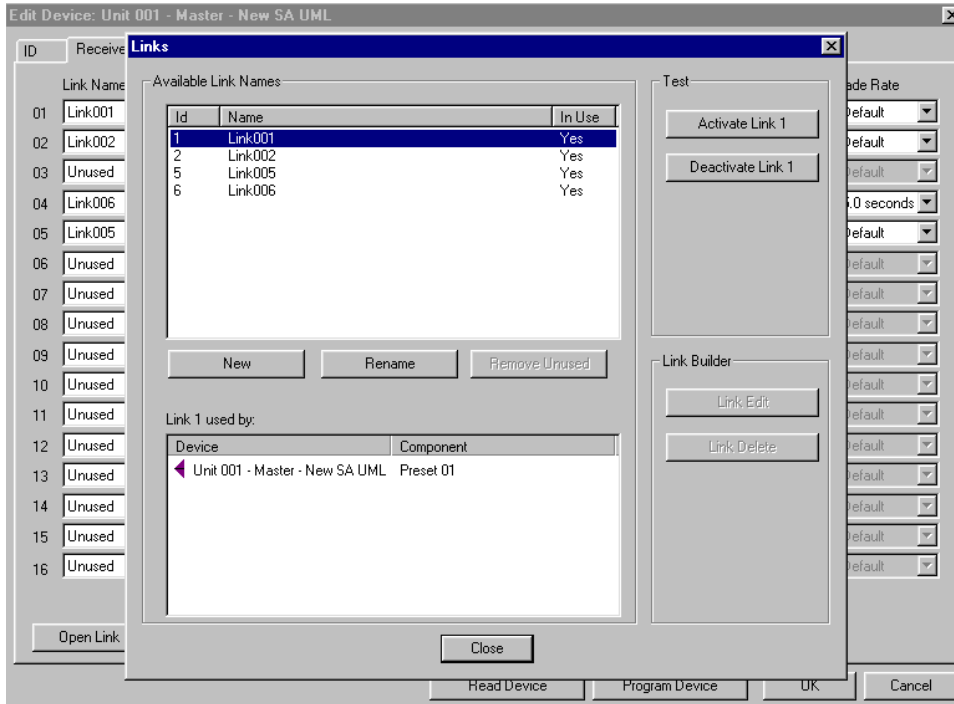
This gives you a good summary of the particular parameters of the device.

- Next, let's associate a device with a link. UPB uses links for most of its control. There are a few default links, as described in the opening paragraph. But, in most cases, you will want to setup your own links. Most devices have the ability to be associated with up to 16 links. If you look at this device, you see that it has 4 links associated with it.



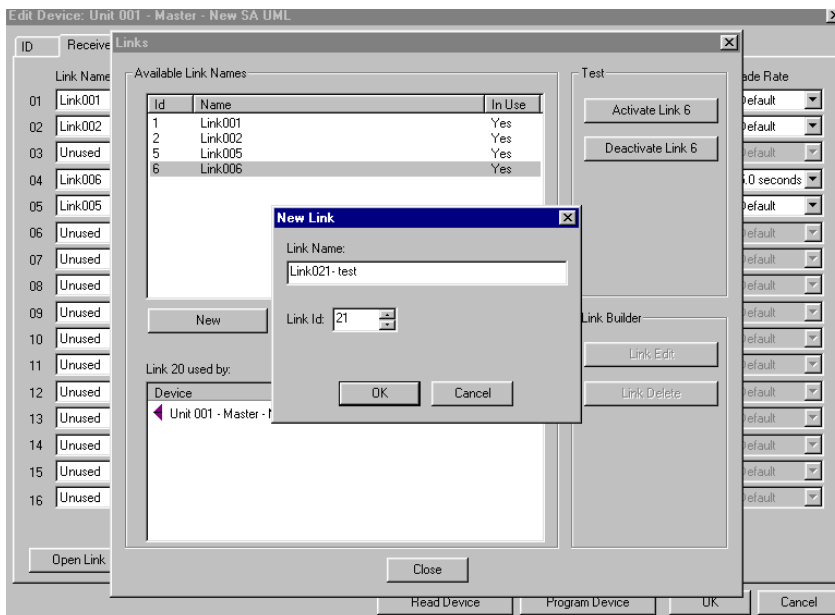
Let's add a link to this device.

16. First, click on the Open Link Name Table.

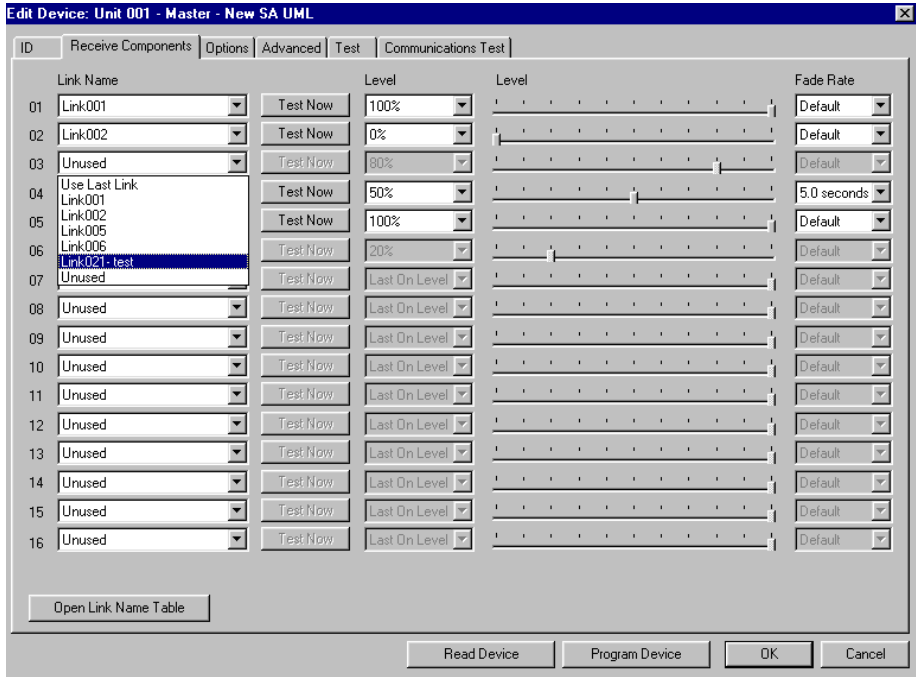


Click on New. It brings up this table.

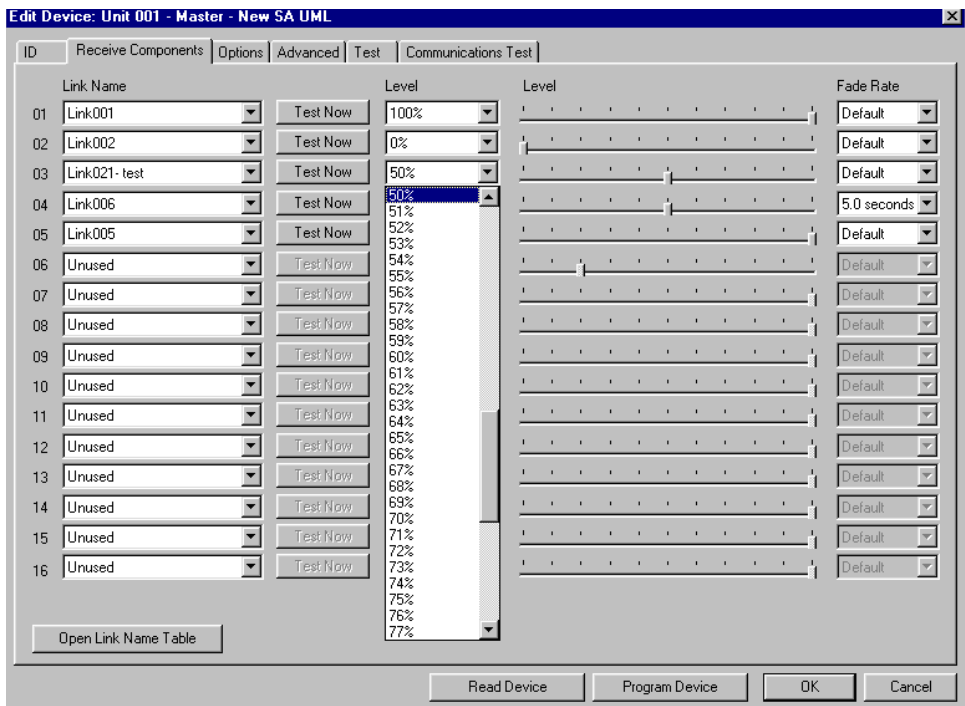
17. Select a new link. You can either accept the suggested link, or come up with your own. We suggest going to Link 21 as the first added link, as many of the links below 20 are default links associated with particular devices. Going to 21 ensures that you won't hit a default link by accident. You can name the link if desired.



18. Click ok on the small window. This will add your new link to the link table.
Click on Close. Now, you are back to the Receive component tab. Go to the 3 spot, and look at the drop down menu – you will see Link21 – test showing up. Select it.



Using the drop down boxes, select an appropriate level and fade rate for the device.



Then, click on Program Device. You have now associated the device to Link 21, such that when the device sees an Activate Link 21 signal, it will turn on to 50% intensity at a fade rate of 5 seconds.

To add another device, just go to the Device, Add process described above and go through it again. The new device will be programmed with the same NID and Network Password and the first device, which ensures that they will talk to each other.

That's mostly it! There's lots more you can do with Upstart, but this gives you a head start. Just play with it, and you'll grasp very quickly what you can do with it.

Good luck and have fun with UPB!

August 2, 2005